



CHAPTER I

INTRODUCTION

1.1 Background of Study

In the globalization era, everyone can easily learn about the cultural diversity that exists in the world. The interaction between humans and every different culture will be made easier along the technological developments, either through cooperation, research or vacation. Therefore, every people must have a greater capacity to understand comprehensively the cultural diversity in the world (Matthew Hendrith, 2018: 20). It is very necessary because cultural differences can make someone experience misunderstandings such as the differences of languages, customs and also perspectives, especially if this is experienced by someone who visits a new culture for the first time. For example, Indonesia is a multicultural country full of cultural diversity such as the differences in ethnicities, religions, races, tradition and languages (Habib Zarbaliyev, 2017:9). One of them is the difference between funeral tradition of Javanese and Toraja Tribe. Someone who comes from the Javanese Tribe will experience culture shock, if they attend in the funeral tradition of Toraja Tribe for the first time. The Toraja Tribe has a funeral tradition called *Rambu Solo*, in which the society in Toraja celebrates the mortality with a festive party. It is in contrast to the Javanese people who regard the mortality as a mourning that is not celebrated with a party. It can happen, because both of Javanese and Toraja Tribes have different cultural backgrounds. This phenomenon may occur in our real life and also in other people as reflected in some movies. One of the movies that shows about the existence of cultural differences is *Eat Pray Love* movie starring by Julia Roberts as a main character, produced by Dede Gardner, directed by Ryan Murphy and released on 2010 in cinema.

The cultural differences that are showed in *Eat Pray Love* movie include three cultures, namely American, Southeast Asia, East Asia and European culture, because this movie talks about the journey of an American woman named Elizabeth Gilbert (Known as Liz) as a main character in finding the true meaning of life after she goes through many problems in her life by visiting three countries, namely Italy, India and Indonesia. In this movie, the three

countries show a different stage of Elizabeth Gilbert's life. Italy is the embodiment of "*Eat*", she finds her appetite for food on there. In Italy, she deals with many different cultures that she has never experienced before. The second country that she has visited is India. India describes "*Pray*"; it is very different from Italy because India is place for a people who gets closer to God. In India, she focuses on finding the peace of life and getting closer to her God. The last country is Indonesia. Indonesia is a symbol of "*Love*", Liz ends the year in Indonesia to find the balance between love and life. In her journey, she has found many cultural differences as habit, perspective and language which are quite contrast with her native culture, American culture. These differences cause Liz gets some of uncomfortable feelings as anxiety when she is dealing with a new culture. In this context, the uncomfortable feelings happens because there is culture shock that encountered by Liz.

Culture shock is an emotional reaction when someone deals with a new culture from a place that has never been visited before. This term was first named by Kalervo Oberg (1960:177) who described it as precipitated by the anxiety that results from losing all our familiar signs and symbols of social intercourse. Culture shock is characterized feeling by someone like nervous and anxiety with unfamiliar ways of custom and fear with some differences in new country (Ward, 2001:61). In addition, Edward Hall in his book *Silent Language* (1959, in Hayqal, 2011) described that culture shock is a disturbance experienced by someone when she/ he faces the differences between the origin place and a new place. It shows that someone who experiences culture shock will feel, behave and also think when facing a second culture.

The phenomenon of culture shock will make each individual feel enthusiasm, anxious and uncomfortable when adapting with the new culture. Everyone also experiences the perceptions changes of cultural values that exist in the new place (Atmy Rese, 2018: 44). This phenomenon is experienced by almost everyone who gets a new culture. Moreover, if the new culture is very different from the native culture, it will take a long time for someone to adapt it. It means that the study of culture shock is very necessary, because not all of the people can adapt when experiencing culture shock even some of people will



feel excessive anxiety, shock and uncomfortable. By analyzing culture shock, I can understand comprehensively what the culture shock is, what are the stages of culture shock and how to deal with it.

The phenomenon of culture shock can be found in our real life and also in other people as reflected in the movie. There are many movies that show about the existence of culture shock such as *Anna and the King*, *Karate Kids*, *My Big Fat Greek Wedding*, *IP Man 4* and *Eat Pray Love* movie. In this study, *Eat Pray Love* movie is taken as the object among the other movie that shows about the stage of culture shock because of the reasons bellow: there are several cultural differences shown in this movie such as American, Southeast Asia, East Asia and European culture in which every culture shows a different stage of culture shock. In this movie, although the main character is an American which is close to European as the western, but she still experiences culture shock when she deals with European culture. This is very important to be analyzed, because those cultures (American and European culture) have different characteristics and show the different stages of culture shock. Related to the topic of this study, this movie talks about the journey of an American woman named Elizabeth Gilbert (Known as Liz) as a main character in finding the true meaning of life after she goes through many problems in her life by visiting three countries, namely Italy, India and Indonesia. In every country, she experienced a lot of emotional reactions when she deals with different culture. These emotional reactions appearance because there is culture shock that encountered by Liz. It means that the reasons of choosing of *Eat Pray Love* movie as the object of the study is in accordance with the research topic of culture shock.

In addition, the same research about culture shock in "Eat Pray Love" has been carried out using the novel as the object of study. While this study uses the same title but it takes the different object, it is the movie. In this study, the movie is taken as an object rather than a novel with the same title "Eat Pray Love" because of some reasons below: in this study, the research results can be found in the form of two data, namely conversations as verbal expressions and scenes as non-verbal expression so that the readers understand comprehensively how someone experiences culture shock not only verbally but also non-verbally.



Moreover, if the main character experiences culture shock, it can be seen clearly the gesture and the facial expression from the scene directly.

The indication of culture shock experienced by Liz can be seen from the example below, they can be both from the scene as the non-verbal expression and from the conversation as the verbal expression:

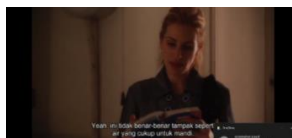


(01:38:40) – (01:38:48)

Figure 1 Example 1

The scene above showed Liz's enthusiasm when she visited Bali, Indonesia. She really enjoyed her moment at the first time she came to Bali. She cycled around her villa enjoying the beautiful view. It can be seen from the non-verbal expression shown by Liz through her facial expression that she smiled widely as a sign of happiness and enthusiasm while enjoying the beautiful scenery. This scene includes the honeymoon stage, because when entering this stage everyone still enjoys the adventure and how it feels friendly to one's new place. Someone who is in the Honeymoon Stage will pass it with full energy and enthusiasm (Ward, 2001:81).

a. Example 2



(00:32:56) – (00:33:22)

Figure 2 Example 2

Women	: “You heat the water on the stove”.
Liz	: “So if I want to bathe...?”
Women	: “You put the water in the tub”.
Liz	: “ <i>non è abbastanza</i> ”
Women	: “ <i>hey, è abbastanza</i> ”
Liz	: “Okay”

This is a conversation between Liz and the lady as the owner an inn in Italy. This conversation happened when Liz entered an inn and met the owner of the inn. When Liz was going to take a shower, the lady gave very little water.

She wanted to say in Italian that the water was not enough for her, but she couldn't speak Italian. Therefore, Liz had to open the Italian dictionary to say “*non è abbastanza*” which means “it is not enough”. This language difference made Liz confused and uncomfortable. It can be known that Liz was experiencing culture shock which she showed directly through verbal expressions, namely language. This stage includes crisis stage, because in this stage someone will begin to feel feelings of inadequacy, frustration, anxiety and anger (Ward, 2001:81). When entering this stage, they will feel that the new culture received by them is very different from their expectations. Many things had made someone feel very uncomfortable when they are at this stage especially the differences of habits, customs, language, traditions and environmental conditions.

The studies related to the topic of culture shock have been done previously. The first previous study was conducted by Ella Asfira (2017) entitled *Culture Shock Experienced by Foreigners in Makassar City*. This research investigated the phases of culture shock experienced by foreigner in Makassar city. The finding of this research showed that there are four phases of culture shock: honeymoon phase, crisis phase, recovery phase and adjustment phase. The second previous study was conducted by Cicik Kelamdari (2012) entitled *Culture Shock Experienced by Elizabeth Gilbert in Eat Pray Love Novel*. This research investigated the culture shock and how to deal with it. The finding showed that the main character experienced three kinds of culture shock namely language shock, social shock and behavior shock. The third previous study was conducted by Pertiwi Indah (2014) entitled *Culture Shock Experienced by Main Character in Lauren Kate's Novel Torment*. This research focused to analyze the phases of culture shock using Collen Ward's theory 2001 and the effects of culture shock experienced by the main character in Kate's *Novel Torment*. The result of this analysis showed that she had found all the phases of culture shock based on Ward's theory 2001. These are Honeymoon, Crisis, Recovery and Adjustment stage. In addition, the research related to the object “*Eat Pray Love Movie*” has also been done previously by some of researchers, one of them is the study that was conducted by Ramadhani Alfi



(2018) entitled *Western Stereotypes Through Eastern Representation as Seen in Film Eat Pray Love: Post Colonialism Study*. This study focused on analyzing domination and authority of West over East in *Eat Pray Love* Movie. The result of this analysis showed that the stereotypes of western people about the eastern in *Eat Pray Love* Movie depicted as simple-minded people and having no power against the Western authority, while the Western are well educated and they have a big authority. The last previous study conducted by Isnawati (2019) entitled *An Analysis of Politeness Strategies Used by Julia Robert in "Eat, Pray, Love" Movie*. This study focuses to analyzing the types of hedges that are used by Julia Robert as a main character in *Eat Pray Love* Movie applying the theory of politeness strategy proposed by Brown and Levinson (1987). The result of this study showed that there are five types of hedges out of seven types found, these are auxiliary, modal lexical, adjectival, approximator degree of quantity and introductory phrases.

From all the previous studies above, there are three researchers choose the same topic with different objects, they are Ella Asfira chooses foreigner in Makassar city as the object, Irawati Khadijah chooses *Eat Pray Love* novel and Pertiwi Indah chooses Kate's Novel *Torment as the object of research*. In addition, the previous studies that have the same object "*Eat Pray Love* Movie" had also been done previously by some researchers with the different topic, as Ramadhani Alfi chose *Western Stereotypes Through Eastern Representation as the topic* and Isnawati chose *Politeness Strategies* as the topic of this study. Then, this study chooses *Eat Pray Love* movie as the object of research and Culture shock as the topic of research. It can be said that the different points from the previous studies above are the topic and also the object of research. Therefore, this study chooses to analyze the main character who experienced culture shock in *Eat Pray Love* movie applying the theory of culture shock proposed by Ward (2001) supported with the theory of non-verbal expression proposed by Charles Sanders Pierce (2003) to analyze the data. Based on the explanation above, **"An Analysis of Culture Shock Experienced by Elizabeth Gilbert in *Eat Pray Love* movie"** chosen as a title of the study.





1.2 Statements of the Problem

1. What are the stages of culture shock through verbal and non-verbal expression experienced by Elizabeth Gilbert in *Eat Pray Love* movie?
2. How are the impacts of culture shock through verbal and non-verbal expression experienced by Elizabeth Gilbert in *Eat Pray Love* movie?

1.3 Objectives of the Study

1. To identify the stages of culture shock through verbal and non-verbal expression experienced by Elizabeth Gilbert in *Eat Pray Love* movie.
2. To explain the impacts of culture shock through verbal and non-verbal expression experienced by Elizabeth Gilbert in *Eat Pray Love* movie.

1.4 Scope and Limitation

This research is a linguistic research branch of Cross-Cultural Understanding that focuses on analyzing the stages culture shock in *Eat Pray Love* movie (2010). This study applies the theory of culture shock proposed by Ward (2001) and supported with the theory of non-verbal expression proposed by Charles Sanders Pierce (2003). The limitation of the study is conversation as verbal expression and the scene as non-verbal expression that show the stages of culture shock experienced by Elizabeth Gilbert as a main character in *Eat Pray Love* movie.

1.5 Significances of the Study

The significance of this study includes the followings:

a) Theoretically

It will contribute to give information and knowledge about the stage of culture shock presented in *Eat Pray Love* movie. This study also will give a research example in Linguistics field. In addition, it provides contribution for whose interested in studying the stage of culture shock by applying the theory of culture shock proposed by Ward (2001).

b) Practically

a) For teachers and students

This research can enrich teachers' and students' knowledge about the stages of culture shock and the positive and negative impacts of culture shock experienced by someone.

b) For readers

This study is useful to make the readers understand comprehensively about the stage of culture shock and how to adapt with new cultures when experiencing culture shock in our life.

c) For other authors

This research can be a reference for further study which analyze the same field.

1.6 Definition of the Key Terms

To avoid misinterpretations and in order to obtain the similarity of meaning between readers and researchers, it is necessary to give definition of the terms.

1. *Eat Pray Love* movie

Eat Pray Love movie is romantic drama film starring by Julia Roberts as a main character, produced by Dede Gardner, directed by Ryan Murphy and released on 2010 in cinema.

2. Culture shock

Culture shock is characterized feeling by someone like nervous and anxiety with unfamiliar ways of custom and fear with some differences in new country. (Ward, 2001:61)

3. Honeymoon Stage

The Honeymoon Stage emphasis on the first reaction of euphoria, enchantment, fascination, and enthusiasm (Ward, 2001:81).

4. Crisis Stage

The Crisis Stage is very different from the Honeymoon Stage in that at this stage someone will begin to feel feelings of inadequacy, frustration, anxiety and anger (Ward, 2001:81).



5. Recovery Stage

The Recovery stage contains crisis resolution and cultural learning after someone experiences problems due to cultural differences (Ward, 2001:81).

6. Adjustment Stage

The Adjustment Stage is a stage where someone has shown pleasure and the functional competence in the new environment (Ward, 2001:81).

1.7 Thesis Organization

The thesis Organizer arranged systematically as follows:

- Chapter I : consisting background of the study, statements of problem, objectives of the study, significance of the study, scope and limitation of the study, definition of key terms, and thesis organization its self.
- Chapter II : Chapter two discusses about the theory of culture shock which is used to find out the data, the stages of culture shock by Ward's theory, the theory of Cross-Cultural Understanding, *Eat Pray Love* movie and related study.
- Chapter III : Chapter three contains research methodology, consisting research design, source of the data, step data collection and step of analyzing data.
- Chapter IV : Chapter four contains findings and discussion. This chapter talk about the stages of culture shock experienced by Elizabeth Gilbert as a main character in *Eat Pray Love* movie and also the kinds of verbal and non-verbal expression showed by Elizabeth Gilbert when she experienced culture shock in *Eat Pray Love* movie.
- Chapter V : This chapter contains the conclusion and suggestions.

